

A: BHICCI Measures Team 1 Report

PHQ-9 Scores

Number of Clients in the Pilot

Number of Active Clients

Apr-16	May-16	Jun-16	Jul-16	Aug-16	Sep-16	Oct-16	Nov-16	Dec-16	Jan-17	Feb-17	Mar-17
--------	--------	--------	--------	--------	--------	--------	--------	--------	--------	--------	--------

15	15	15	15	15	15						
----	----	----	----	----	----	--	--	--	--	--	--

PHQ-9: Improvement

Patients in care 6+ weeks with baseline of 10+

Patients with ≥ 5 Point Improvement

% with ≥ 5 Point Improvement

10	10	10	10	10	10						
4	4	5	5	6	6						
40%	40%	50%	50%	60%	60%						

PHQ-9: Response

Patients in care 6+ weeks with baseline of 10+

Patients with 50%+ Improvement

% with 50%+ Improvement

10	10	10	10	10	10						
1	1	2	2	3	3						
10%	10%	20%	20%	30%	30%						

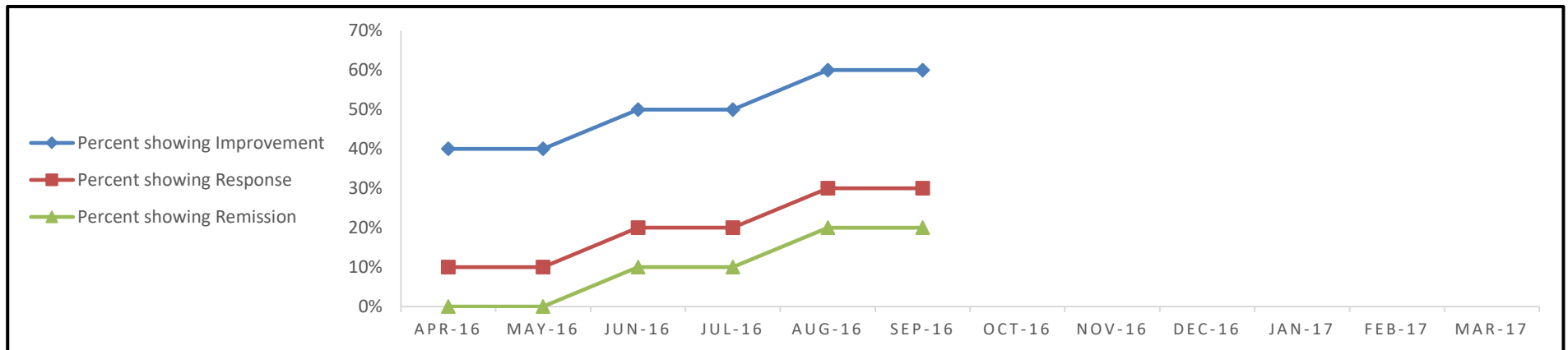
PHQ-9: Remission

Patients in care 6+ weeks with baseline of 10+

Patients with most recent score below 5

% with most recent score below 5

10	10	10	10	10	10						
0	0	1	1	2	2						
0%	0%	10%	10%	20%	20%						



A: BHICCI Measures Team 1 Report

GAD-7 Scores

Number of Clients in the Pilot

Number of Active Clients

Apr-16	May-16	Jun-16	Jul-16	Aug-16	Sep-16	Oct-16	Nov-16	Dec-16	Jan-17	Feb-17	Mar-17
--------	--------	--------	--------	--------	--------	--------	--------	--------	--------	--------	--------

15	15	15	15	15	15						
----	----	----	----	----	----	--	--	--	--	--	--

GAD-7: Improvement

Patients in care 6+ weeks with baseline of 10+

Patients with ≥ 5 Point Improvement

% with ≥ 5 Point Improvement

10	10	10	10	10	10						
4	4	5	5	6	6						
40%	40%	50%	50%	60%	60%						

GAD-7: Response

Patients in care 6+ weeks with baseline of 10+

Patients with 50%+ Improvement

% with 50%+ Improvement

10	10	10	10	10	10						
1	1	2	2	3	3						
10%	10%	20%	20%	30%	30%						

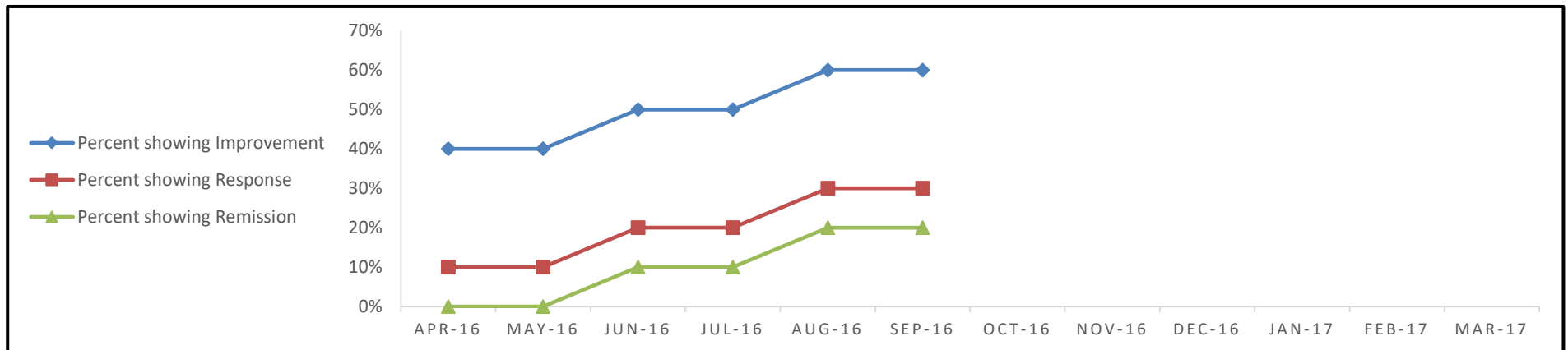
GAD-7: Remission

Patients in care 6+ weeks with baseline of 10+

Patients with most recent score below 5

% with most recent score below 5

10	10	10	10	10	10						
0	0	1	1	2	2						
0%	0%	10%	10%	20%	20%						



A: BHICCI Measures Team 1 Report

SA Assessment Scores

Number of Clients in the Pilot

Number of Active Clients

For the 6 Months Ended September 2016

Apr-16	May-16	Jun-16	Jul-16	Aug-16	Sep-16	Oct-16	Nov-16	Dec-16	Jan-17	Feb-17	Mar-17
--------	--------	--------	--------	--------	--------	--------	--------	--------	--------	--------	--------

15	15	15	15	15	15						
----	----	----	----	----	----	--	--	--	--	--	--

SA Assessment - Alcohol: Improvement

Patients in care 6+ weeks with baseline of 5+

Patients with ≥ 3 Point Improvement

% with ≥ 3 Point Improvement

10	10	10	10	10	10						
4	4	5	5	6	6						
40%	40%	50%	50%	60%	60%						

SA Assessment - Alcohol: Response

Patients in care 6+ weeks with baseline of 5+

Patients with 50%+ Improvement

% with 50%+ Improvement

10	10	10	10	10	10						
2	2	3	3	4	4						
20%	20%	30%	30%	40%	40%						

SA Assessment - Drug: Improvement

Patients in care 6+ weeks with baseline of 5+

Patients with ≥ 3 Point Improvement

% with ≥ 3 Point Improvement

10	10	10	10	10	10						
5	5	6	6	7	7						
50%	50%	60%	60%	70%	70%						

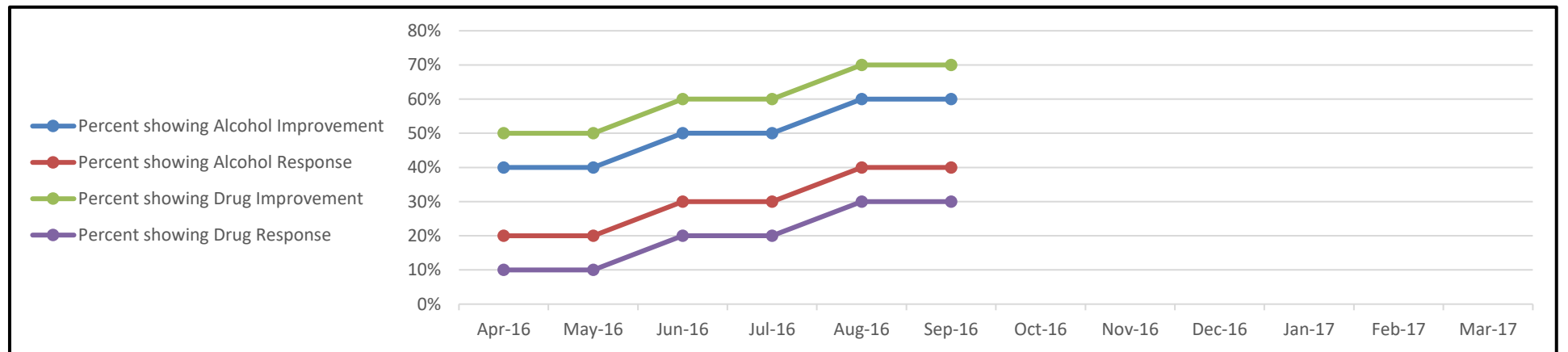
SA Assessment - Drug: Response

Patients in care 6+ weeks with baseline of 5+

Patients with 50%+ Improvement

% with 50%+ Improvement

10	10	10	10	10	10						
1	1	2	2	3	3						
10%	10%	20%	20%	30%	30%						



A: BHICCI Measures Team 1 Report

ANSA Scores

Number of Clients in the Pilot

Number of Active Clients

Apr-16	May-16	Jun-16	Jul-16	Aug-16	Sep-16	Oct-16	Nov-16	Dec-16	Jan-17	Feb-17	Mar-17
--------	--------	--------	--------	--------	--------	--------	--------	--------	--------	--------	--------

15	15	15	15	15	15						
----	----	----	----	----	----	--	--	--	--	--	--

ANSA Medication: Improvement

Patients in care 6+ weeks with baseline of 2+

Patients with ≥ 1 Point Improvement

% with ≥ 1 Point Improvement

10	10	10	10	10	10						
5	5	5	5	5	5						
50%	50%	50%	50%	50%	50%						

ANSA Motivation: Improvement

Patients in care 6+ weeks with baseline of 2+

Patients with ≥ 1 Point Improvement

% with ≥ 1 Point Improvement

10	10	10	10	10	10						
5	5	5	5	5	5						
50%	50%	50%	50%	50%	50%						

ANSA Resiliency: Improvement

Patients in care 6+ weeks with baseline of 2+

Patients with ≥ 1 Point Improvement

% with ≥ 1 Point Improvement

10	10	10	10	10	10						
5	5	5	5	5	5						
50%	50%	50%	50%	50%	50%						

A: BHICCI Measures Team 1 Report

SDQ Scores

Number of Clients in the Pilot

Number of Active Clients

For the 6 Months Ended September 2016

Apr-16	May-16	Jun-16	Jul-16	Aug-16	Sep-16	Oct-16	Nov-16	Dec-16	Jan-17	Feb-17	Mar-17
--------	--------	--------	--------	--------	--------	--------	--------	--------	--------	--------	--------

50	50	50	50	50	50						
----	----	----	----	----	----	--	--	--	--	--	--

SDQ Parent, Age 2-4: Improvement

Patients in care 6+ weeks: baseline borderline or abnormal

Patients with reduction in clinically significant thresholds

% with reduction in clinically significant thresholds

15	17	19	21	23	25						
5	6	7	8	9	10						
33%	35%	37%	38%	39%	40%						

SDQ Parent, Age 4-17: Improvement

Patients in care 6+ weeks: baseline borderline or abnormal

Patients with reduction in clinically significant thresholds

% with reduction in clinically significant thresholds

10	11	12	13	14	15						
5	6	7	8	9	10						
50%	55%	58%	62%	64%	67%						

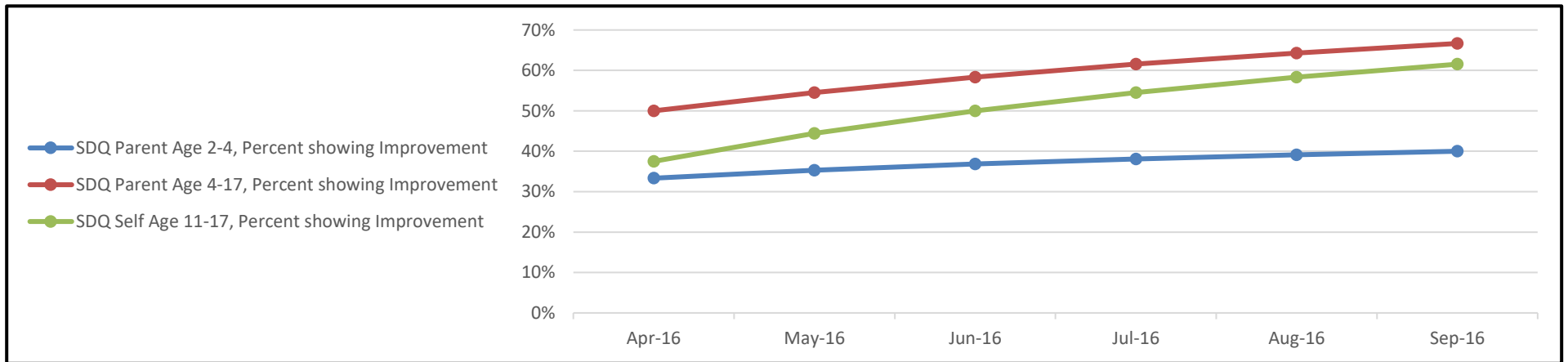
SDQ Self, Age 11-17: Improvement

Patients in care 6+ weeks: baseline borderline or abnormal

Patients with reduction in clinically significant thresholds

% with reduction in clinically significant thresholds

8	9	10	11	12	13						
3	4	5	6	7	8						
38%	44%	50%	55%	58%	62%						



A: BHICCI Measures Team 1 Report

Medical Measures

Number of Clients in the Pilot

Number of Active Clients

Apr-16	May-16	Jun-16	Jul-16	Aug-16	Sep-16	Oct-16	Nov-16	Dec-16	Jan-17	Feb-17	Mar-17
--------	--------	--------	--------	--------	--------	--------	--------	--------	--------	--------	--------

50	50	50	50	50	50						
----	----	----	----	----	----	--	--	--	--	--	--

HbA1c Improvement

Patients in care 12+ weeks with HbA1c score \geq 8%

Patients with a 1%+ reduction in HbA1c

% with a 1%+ reduction in HbA1c

12	20	25	30	35	40						
2	4	6	8	10	12						
17%	20%	24%	27%	29%	30%						

HbA1c Control

Patients in care 12+ weeks with HbA1c score \geq 8%

Patients with HbA1c score below 8.0

% of Patients with HbA1c score below 8.0

12	20	25	30	35	40						
1	2	3	4	5	6						
8%	10%	12%	13%	14%	15%						

Blood Pressure Control

Patients with baseline SBP \geq 140 OR DBP \geq 90

Patients with most recent BP score < 140/90

% Patients with most recent BP score < 140/90

40	40	40	40	40	40						
3	3	10	15	17	20						
8%	8%	25%	38%	43%	50%						

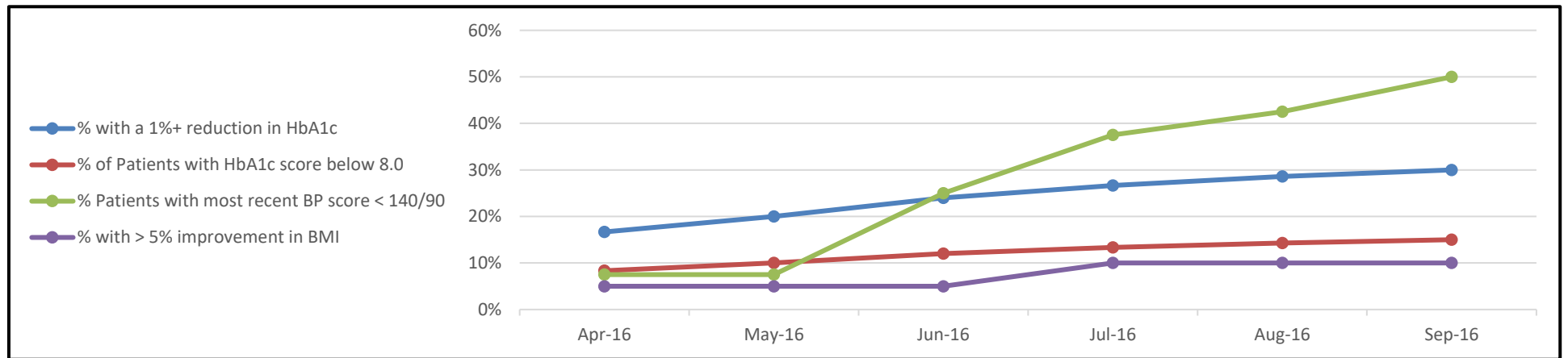
Body Mass Index Improvement

Patients in care 12+ weeks with baseline BMI \geq 25

Patients with \geq 5% improvement in BMI

% with \geq 5% improvement in BMI

20	20	20	20	20	20						
1	1	1	2	2	2						
5%	5%	5%	10%	10%	10%						



B: BHICCI Measures Team Comparisons

For the Period Ended September 2016

PHQ-9 Scores

Number of Clients in the Pilot

Number of Active Clients

Team 1	Team 2	Team 3	Team 4	Team 5	Team 6	-	-	-	-	-	-
--------	--------	--------	--------	--------	--------	---	---	---	---	---	---

15	15	15	15	15	15						
----	----	----	----	----	----	--	--	--	--	--	--

PHQ-9: Improvement

Patients in care 6+ weeks with baseline of 10+

Patients with ≥ 5 Point Improvement

% with ≥ 5 Point Improvement

10	10	10	10	10	10						
4	4	5	5	6	6						
40%	40%	50%	50%	60%	60%						

PHQ-9: Response

Patients in care 6+ weeks with baseline of 10+

Patients with 50%+ Improvement

% with 50%+ Improvement

10	10	10	10	10	10						
1	1	2	2	3	3						
10%	10%	20%	20%	30%	30%						

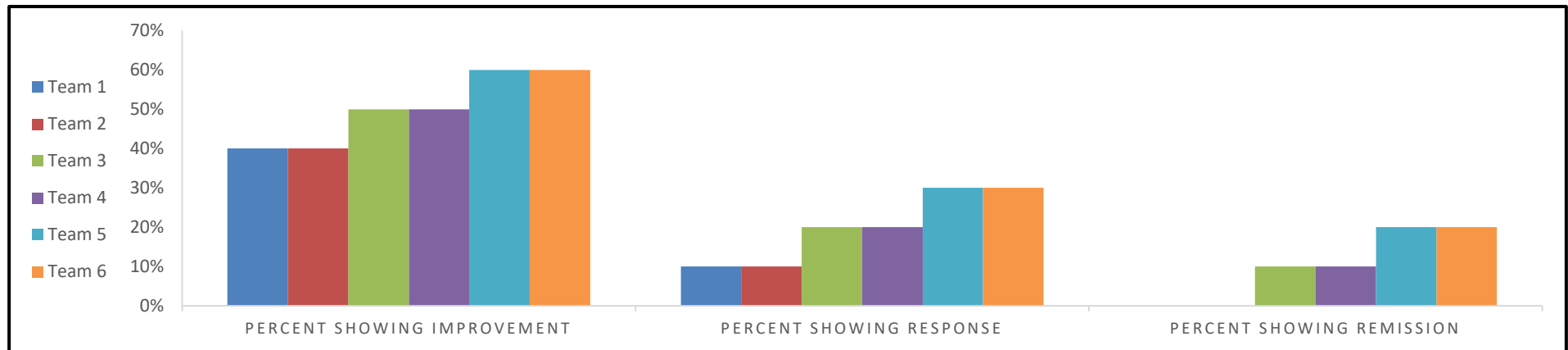
PHQ-9: Remission

Patients in care 6+ weeks with baseline of 10+

Patients with most recent score below 5

% with most recent score below 5

10	10	10	10	10	10						
0	0	1	1	2	2						
0%	0%	10%	10%	20%	20%						



B: BHICCI Measures Team Comparisons

For the Period Ended September 2016

GAD-7 Scores

Team 1	Team 2	Team 3	Team 4	Team 5	Team 6	-	-	-	-	-	-
15	15	15	15	15	15						

Number of Clients in the Pilot

Number of Active Clients

15	15	15	15	15	15						
----	----	----	----	----	----	--	--	--	--	--	--

GAD-7: Improvement

Patients in care 6+ weeks with baseline of 10+

Patients with ≥ 5 Point Improvement

% with ≥ 5 Point Improvement

10	10	10	10	10	10						
4	4	5	5	6	6						
40%	40%	50%	50%	60%	60%						

GAD-7: Response

Patients in care 6+ weeks with baseline of 10+

Patients with 50%+ Improvement

% with 50%+ Improvement

10	10	10	10	10	10						
1	1	2	2	3	3						
10%	10%	20%	20%	30%	30%						

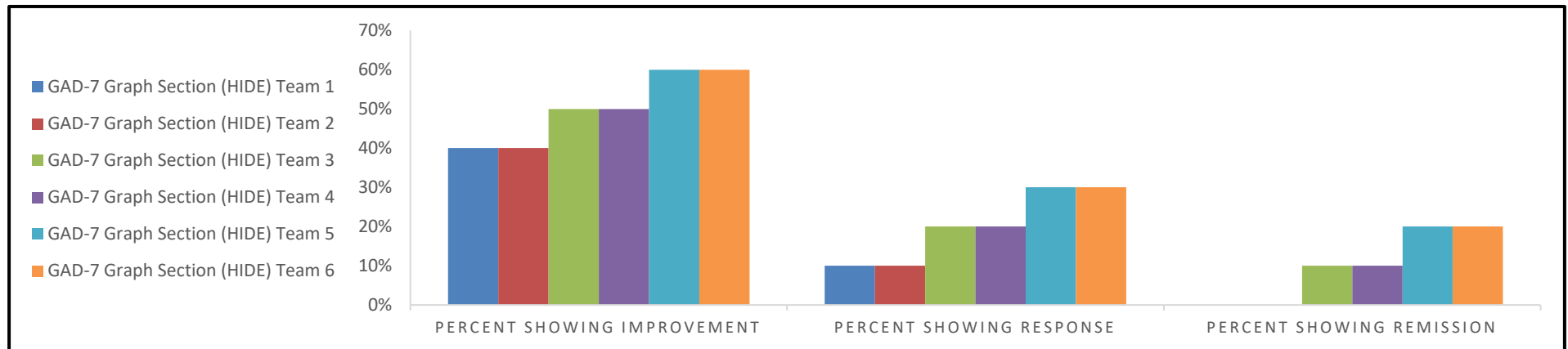
GAD-7: Remission

Patients in care 6+ weeks with baseline of 10+

Patients with most recent score below 5

% with most recent score below 5

10	10	10	10	10	10						
0	0	1	1	2	2						
0%	0%	10%	10%	20%	20%						



B: BHICCI Measures Team Comparisons

For the Period Ended September 2016

SA Assessment Scores

Team 1	Team 2	Team 3	Team 4	Team 5	Team 6	-	-	-	-	-	-
--------	--------	--------	--------	--------	--------	---	---	---	---	---	---

Number of Clients in the Pilot

Number of Active Clients

15	15	15	15	15	15						
----	----	----	----	----	----	--	--	--	--	--	--

SA Assessment - Alcohol: Improvement

Patients in care 6+ weeks with baseline of 5+

Patients with ≥ 3 Point Improvement

% with ≥ 3 Point Improvement

10	10	10	10	10	10						
4	4	5	5	6	6						
40%	40%	50%	50%	60%	60%						

SA Assessment - Alcohol: Response

Patients in care 6+ weeks with baseline of 5+

Patients with 50%+ Improvement

% with 50%+ Improvement

10	10	10	10	10	10						
2	2	3	3	4	4						
20%	20%	30%	30%	40%	40%						

SA Assessment - Drug: Improvement

Patients in care 6+ weeks with baseline of 5+

Patients with ≥ 3 Point Improvement

% with ≥ 3 Point Improvement

10	10	10	10	10	10						
5	5	6	6	7	7						
50%	50%	60%	60%	70%	70%						

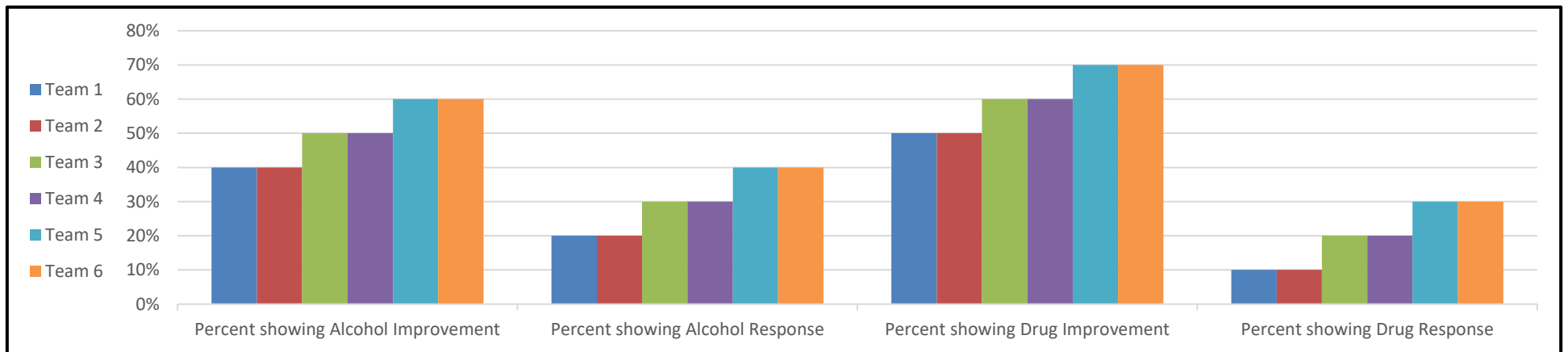
SA Assessment - Drug: Response

Patients in care 6+ weeks with baseline of 5+

Patients with 50%+ Improvement

% with 50%+ Improvement

10	10	10	10	10	10						
1	1	2	2	3	3						
10%	10%	20%	20%	30%	30%						



B: BHICCI Measures Team Comparisons

For the Period Ended September 2016

ANSA Scores

Team 1	Team 2	Team 3	Team 4	Team 5	Team 6	-	-	-	-	-	-
--------	--------	--------	--------	--------	--------	---	---	---	---	---	---

Number of Clients in the Pilot

Number of Active Clients

15	15	15	15	15	15						
----	----	----	----	----	----	--	--	--	--	--	--

ANSA Medication: Improvement

Patients in care 6+ weeks with baseline of 2+

Patients with ≥ 1 Point Improvement

% with ≥ 1 Point Improvement

10	10	10	10	10	10						
5	5	5	5	5	5						
50%	50%	50%	50%	50%	50%						

ANSA Motivation: Improvement

Patients in care 6+ weeks with baseline of 2+

Patients with ≥ 1 Point Improvement

% with ≥ 1 Point Improvement

10	10	10	10	10	10						
5	5	5	5	5	5						
50%	50%	50%	50%	50%	50%						

ANSA Resiliency: Improvement

Patients in care 6+ weeks with baseline of 2+

Patients with ≥ 1 Point Improvement

% with ≥ 1 Point Improvement

10	10	10	10	10	10						
5	5	5	5	5	5						
50%	50%	50%	50%	50%	50%						

B: BHICCI Measures Team Comparisons

For the Period Ended September 2016

SDQ Scores

Team 1	Team 2	Team 3	Team 4	Team 5	Team 6	-	-	-	-	-	-
--------	--------	--------	--------	--------	--------	---	---	---	---	---	---

Number of Clients in the Pilot

Number of Active Clients

50	50	50	50	50	50						
----	----	----	----	----	----	--	--	--	--	--	--

SDQ Parent, Age 2-4: Improvement

Patients in care 6+ weeks: baseline borderline or abnormal
 Patients with reduction in clinically significant thresholds
 % with reduction in clinically significant thresholds

15	17	19	21	23	25						
5	6	7	8	9	10						
33%	35%	37%	38%	39%	40%						

SDQ Parent, Age 4-17: Improvement

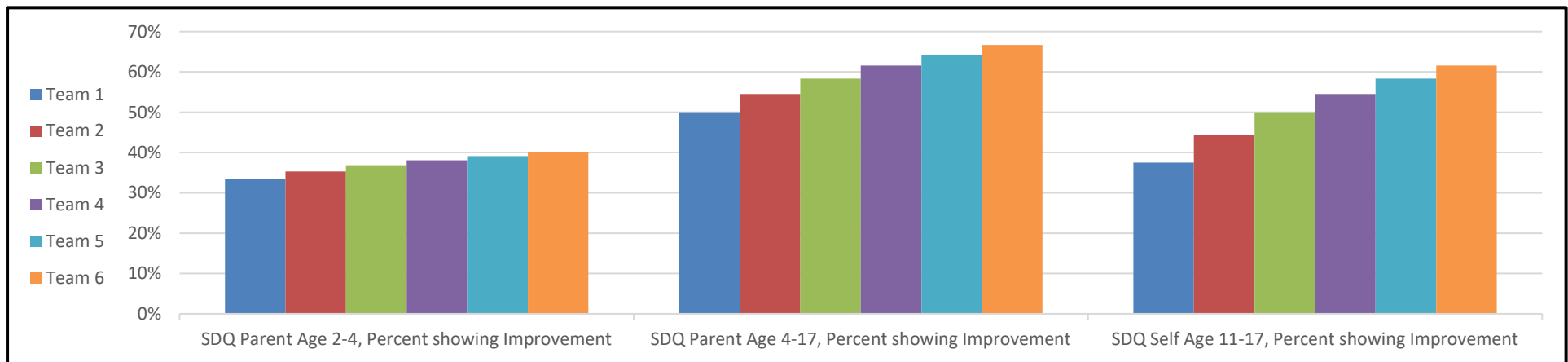
Patients in care 6+ weeks: baseline borderline or abnormal
 Patients with reduction in clinically significant thresholds
 % with reduction in clinically significant thresholds

10	11	12	13	14	15						
5	6	7	8	9	10						
50%	55%	58%	62%	64%	67%						

SDQ Self, Age 11-17: Improvement

Patients in care 6+ weeks: baseline borderline or abnormal
 Patients with reduction in clinically significant thresholds
 % with reduction in clinically significant thresholds

8	9	10	11	12	13						
3	4	5	6	7	8						
38%	44%	50%	55%	58%	62%						



B: BHICCI Measures Team Comparisons

For the Period Ended September 2016

Medical Measures

Number of Clients in the Pilot

Number of Active Clients

Team 1	Team 2	Team 3	Team 4	Team 5	Team 6	-	-	-	-	-	-
50	50	50	50	50	50						

50	50	50	50	50	50						
----	----	----	----	----	----	--	--	--	--	--	--

HbA1c Improvement

Patients in care 12+ weeks with HbA1c score \geq 8%

Patients with a 1%+ reduction in HbA1c

% with a 1%+ reduction in HbA1c

12	20	25	30	35	40						
2	4	6	8	10	12						
17%	20%	24%	27%	29%	30%						

HbA1c Control

Patients in care 12+ weeks with HbA1c score \geq 8%

Patients with HbA1c score below 8.0

% of Patients with HbA1c score below 8.0

12	20	25	30	35	40						
1	2	3	4	5	6						
8%	10%	12%	13%	14%	15%						

Blood Pressure Control

Patients with baseline BP score \geq 140/90

Patients with most recent BP score < 140/90

% Patients with most recent BP score < 140/90

40	40	40	40	40	40						
3	3	10	15	17	20						
8%	8%	25%	38%	43%	50%						

Body Mass Index Improvement

Patients in care 12+ weeks with baseline BMI \geq 25

Patients with \geq 5% improvement in BMI

% with \geq 5% improvement in BMI

20	20	20	20	20	20						
1	1	1	2	2	2						
5%	5%	5%	10%	10%	10%						

